

# SESSION 3:

## HARNASSING THE CHARISMA OF SEA TURTLES TO BRING STEM ALIVE IN THE CLASSROOM



# Creating Tomorrow's Scientists

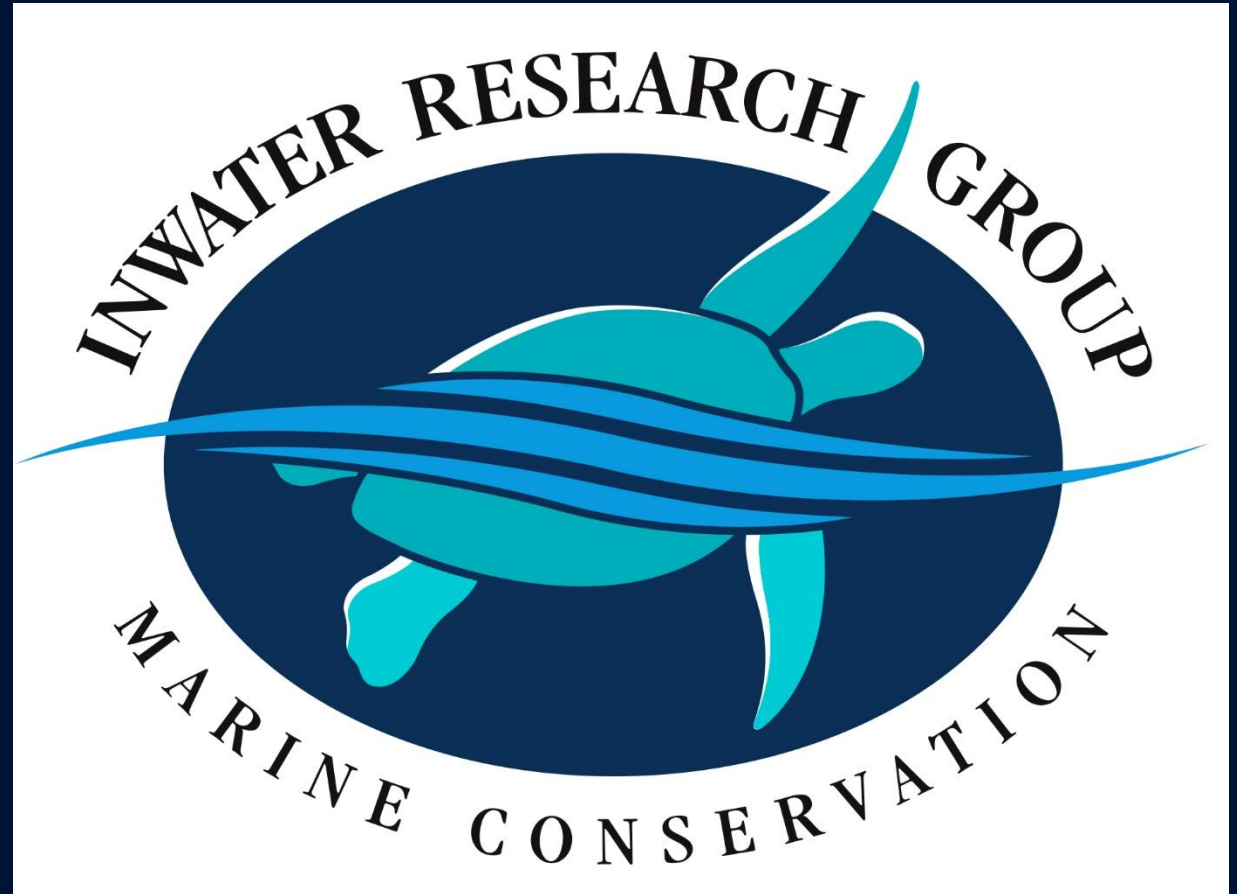
Rebecca Mott  
Inwater Research Group



# Who is IRG?

---

- 501(c)(3)
- ~10 Staff Members
- Martin County
- Sea Turtle Conservation
- Research/Education
- Projects all Over FL



# Who is IRG?

## St. Lucie Site

- Power Plant = Conservation?
- 300-900 turtles/year
- Data Collection
- Strandings
- Rehab



# Who is IRG?

---

## In-water Research

- Several FL Sites
- Ecology in Real Time
- Undiscovered Areas
- Rodeo/Dip net





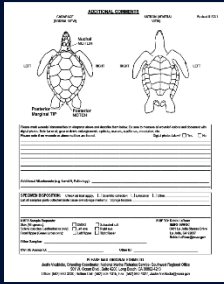
# How Do We Convert Research to Education?

---

# How do we Convert Research to Education?

Population dynamics

Body condition

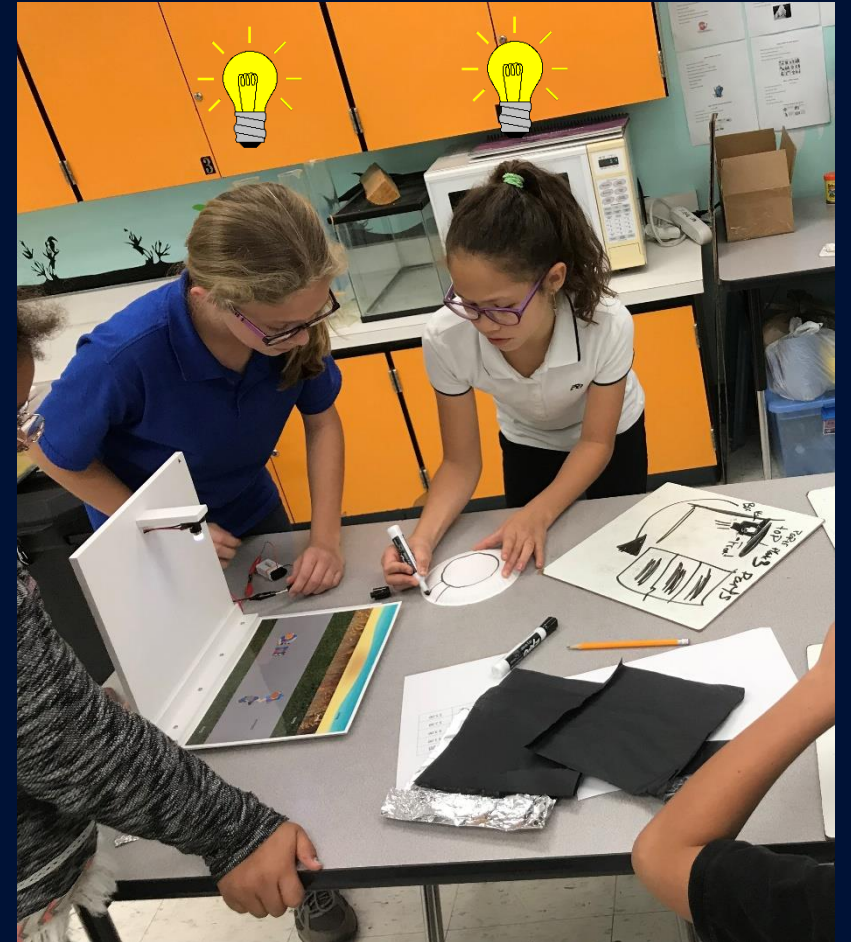
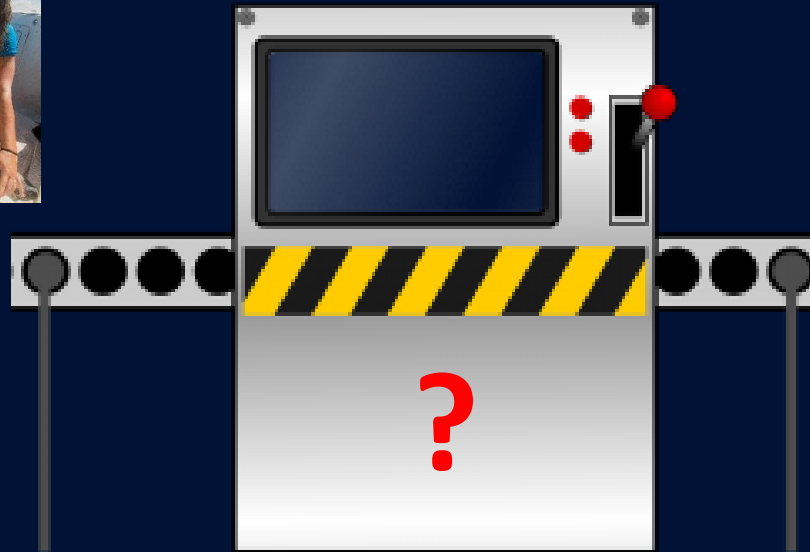


Electromagnetic spectrum



Site fidelity

Data collection

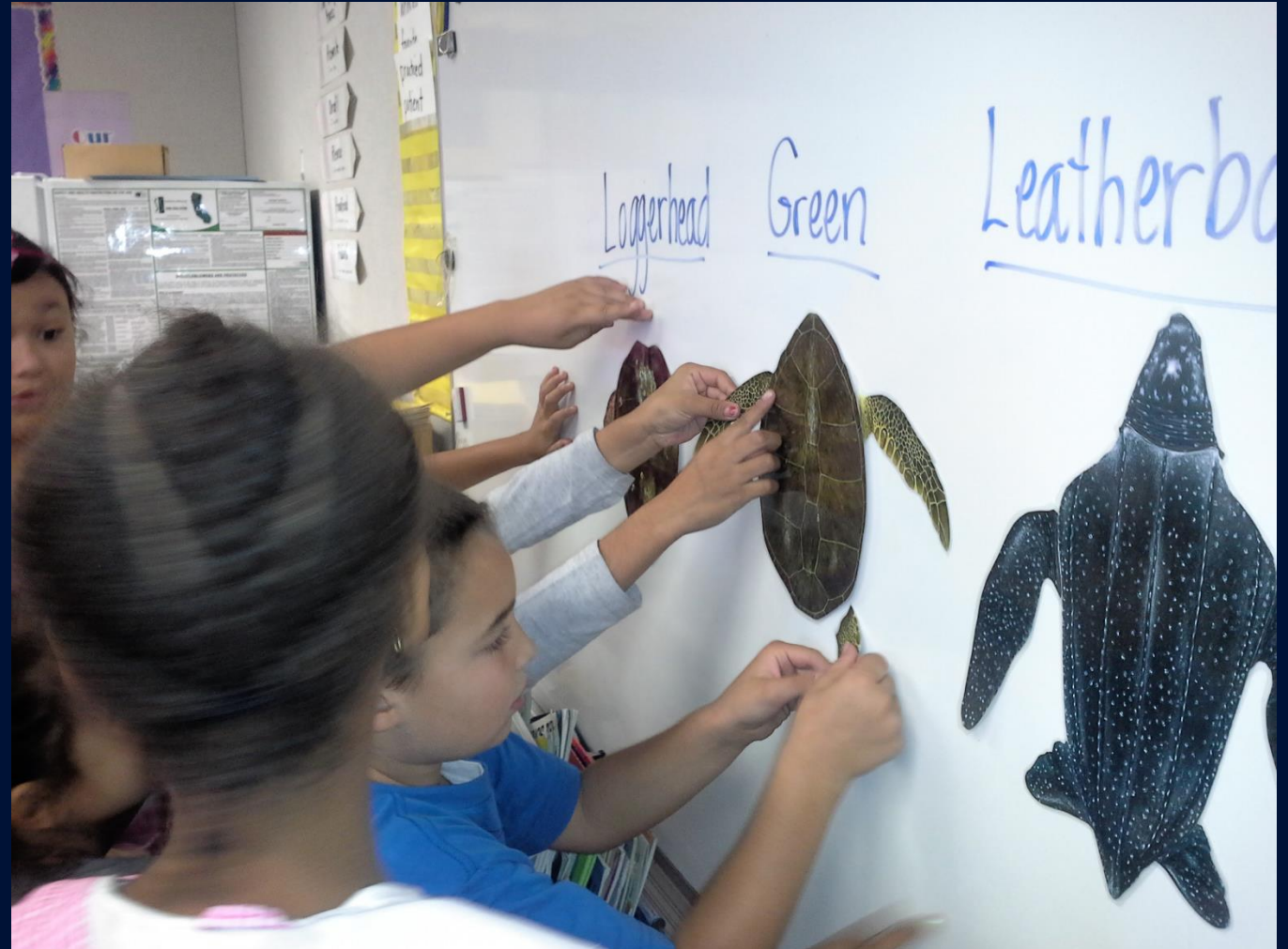




# IRG Education

1. K-12<sup>th</sup> curricula
2. Traveling Trunks

- Align with NGSSS
- FREE
- Engaging



# Traveling Turtles

- 3<sup>rd</sup>-8<sup>th</sup> grade but scalable to ANY grade level
- 4-lesson module
- Lent for 3+ weeks
- Skull replicas and prey items
- Individualized sea turtles
- Scientific tools
- FREE



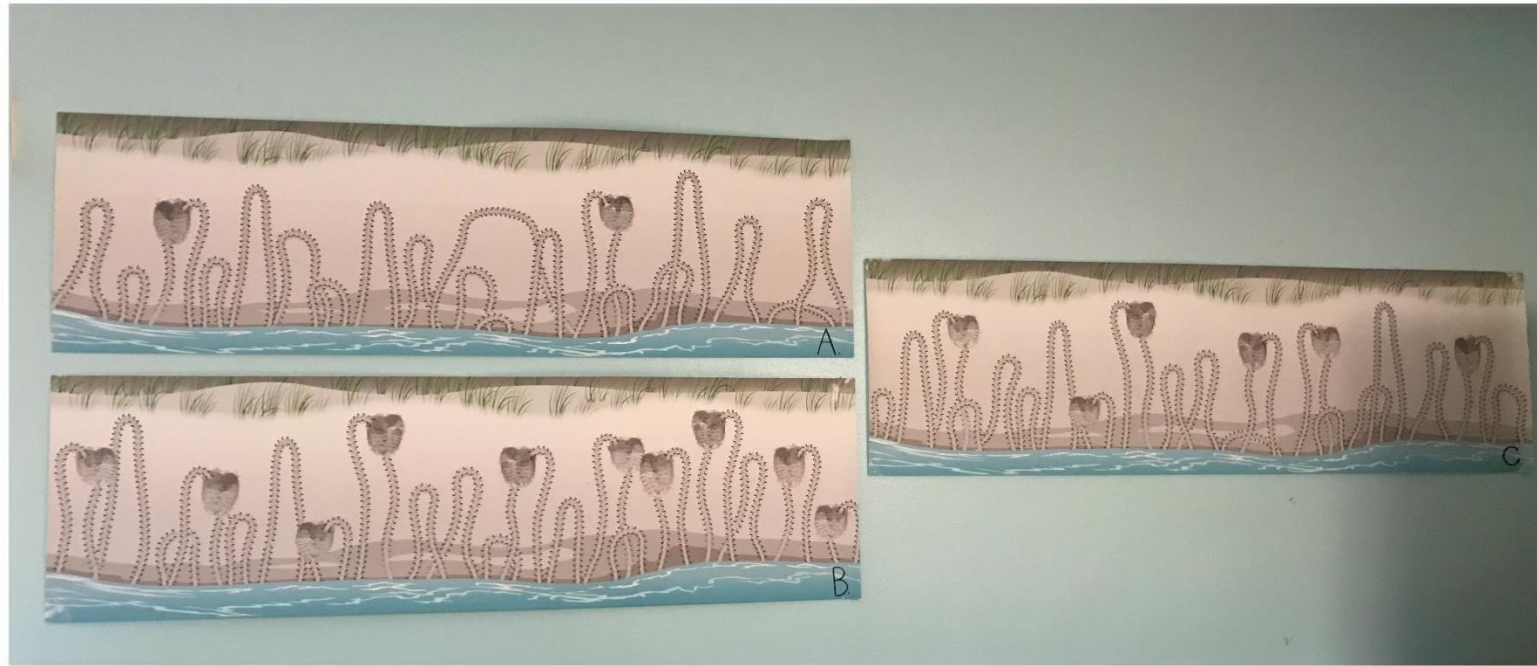
# Traveling Turtles Lessons

1. Introduction to Sea Turtles
2. Nesting Behaviors
3. Sampling a Population
4. Rehab or Release?



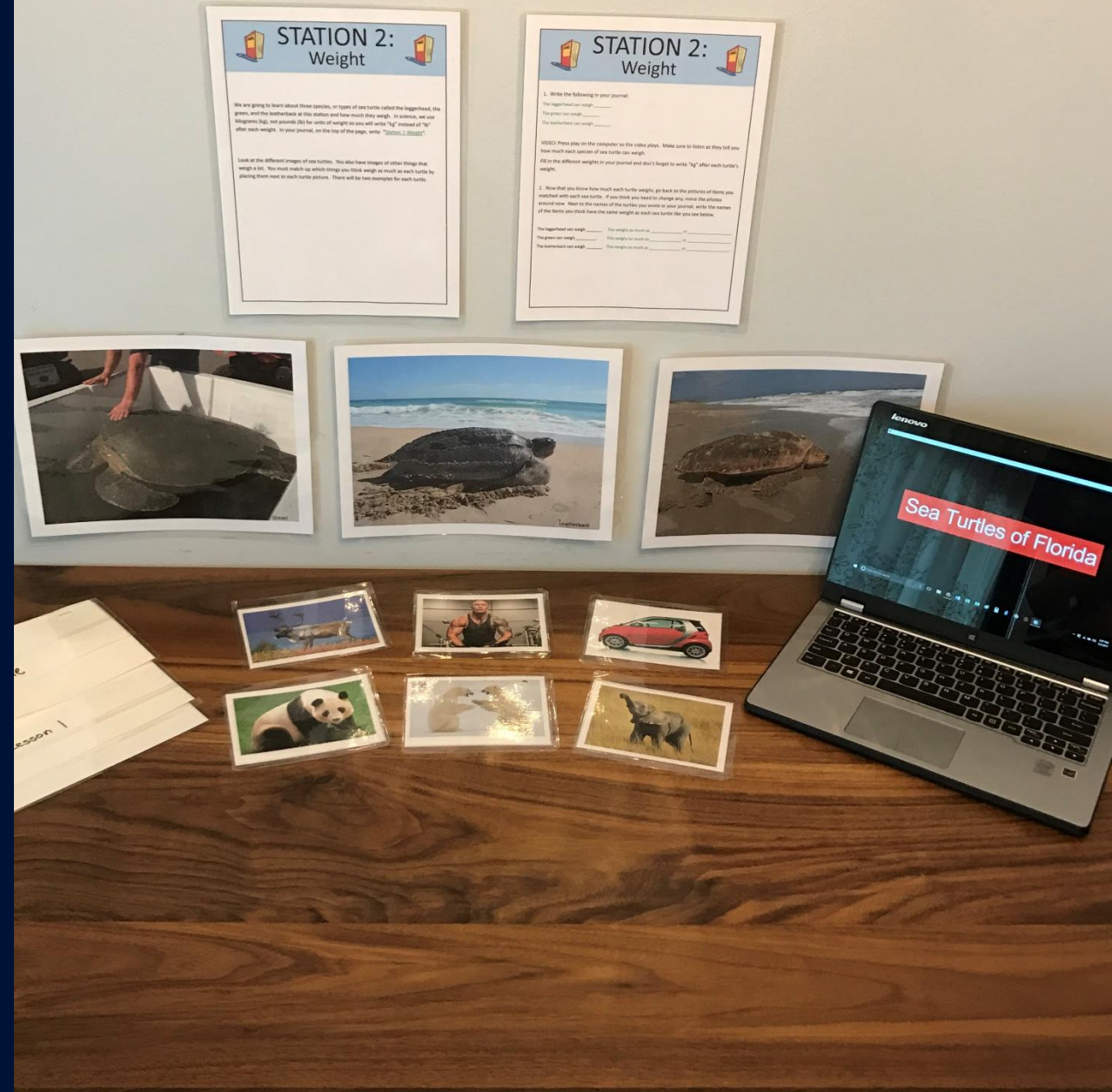
# Darker Skies Darker Beaches

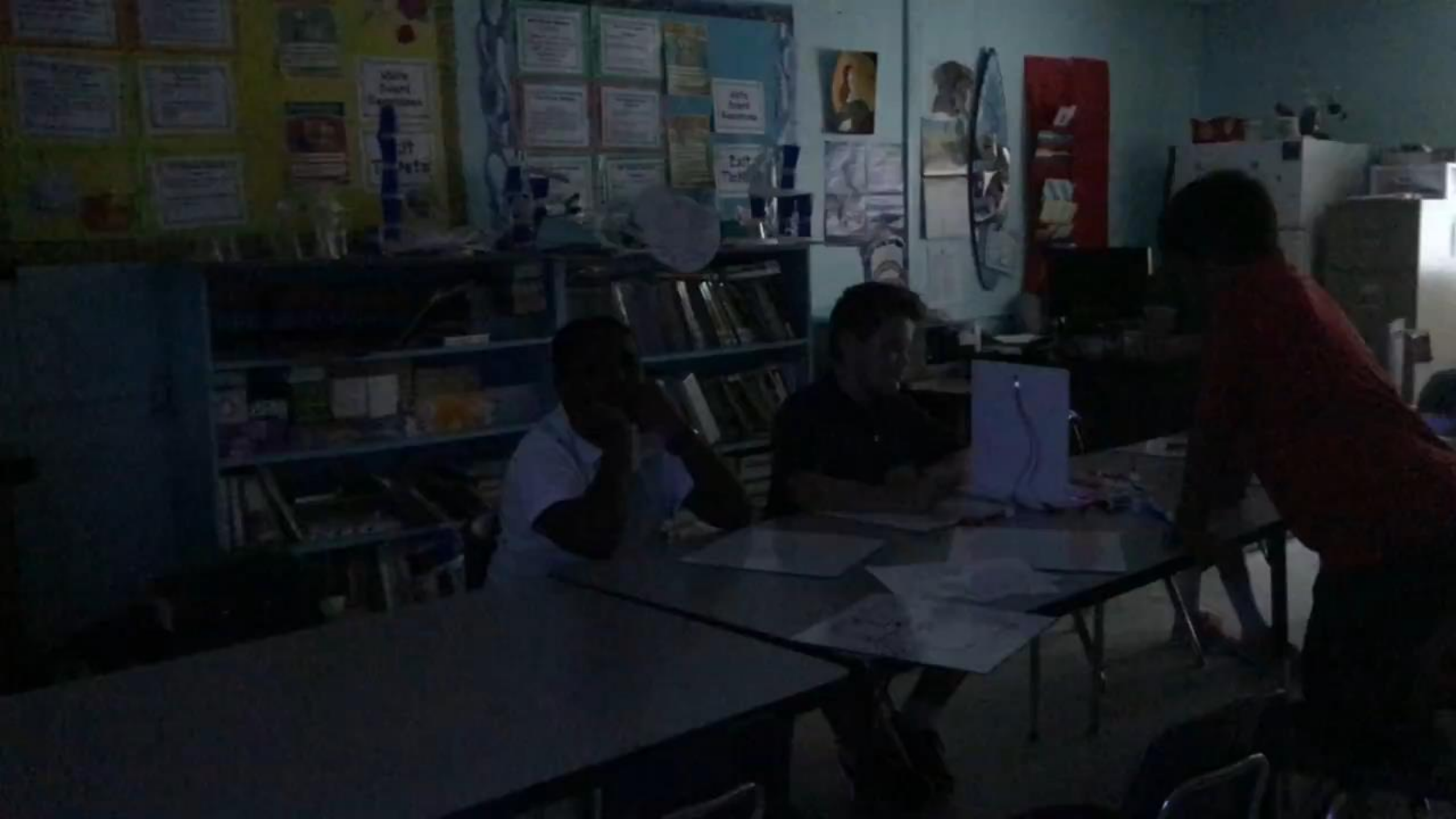
- Skull replicas
- Forms of energy
- Circuit boards
- False crawl graphics
- Real light fixtures



# Darker Skies Darker Beaches Lessons

1. Intro to Sea Turtles
2. Forms of Energy/Building a circuit
3. Turtle-friendly Lights (EDP)
4. Engineering Design Process



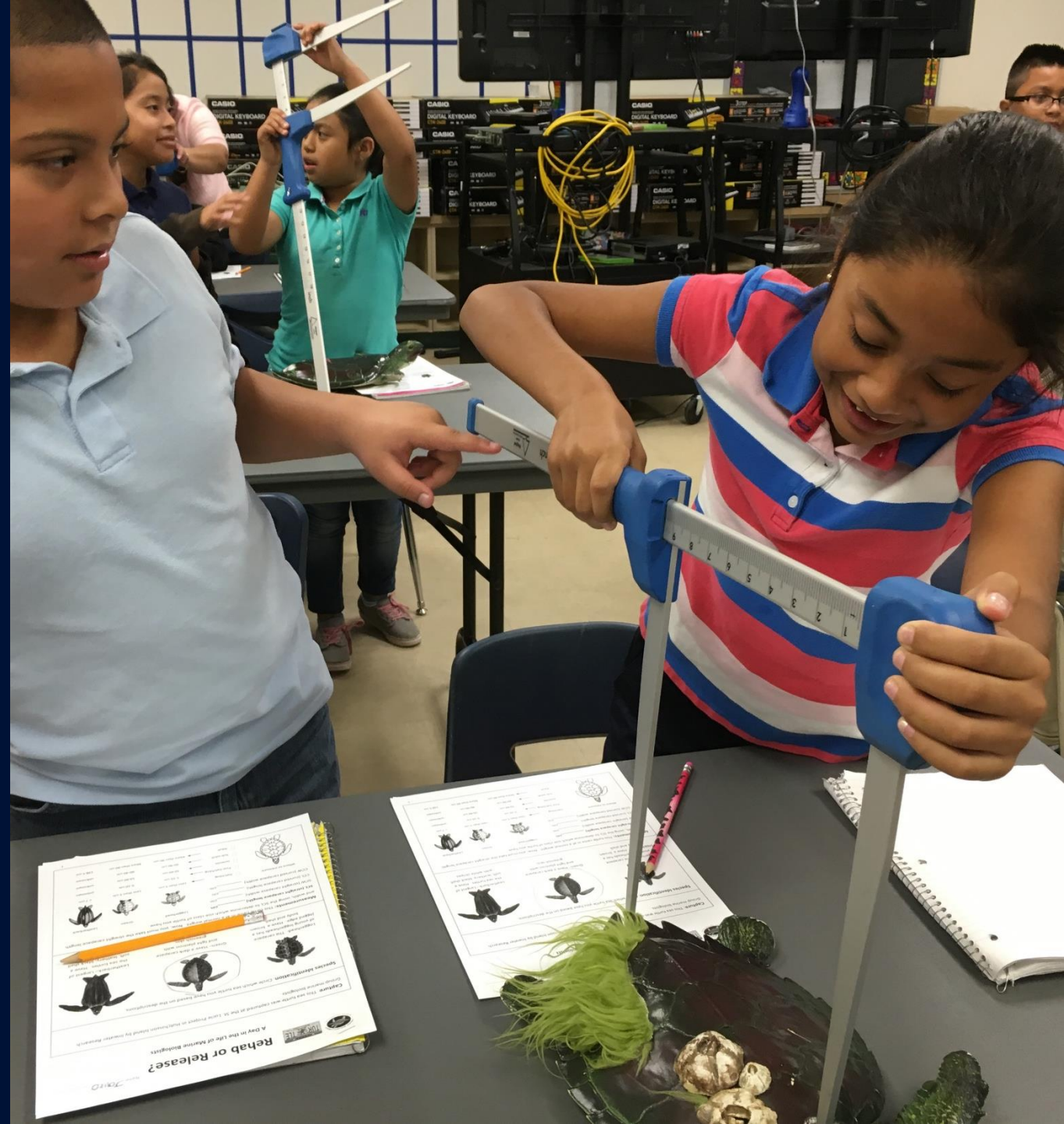


# Student Reactions

*"I got to be a marine biologist.  
That was awesome!"*

*"Come on guys, we have to save  
the turtles!"*

*-Student feedback from teacher survey*



# Teacher Reactions

*“We had a lot of fun and learned so much. So many skills were utilized here! Metric system, comparative anatomy, data collection, critical thinking, problem solving, physics, Darwinian adaptation, math, and so much more!!”*

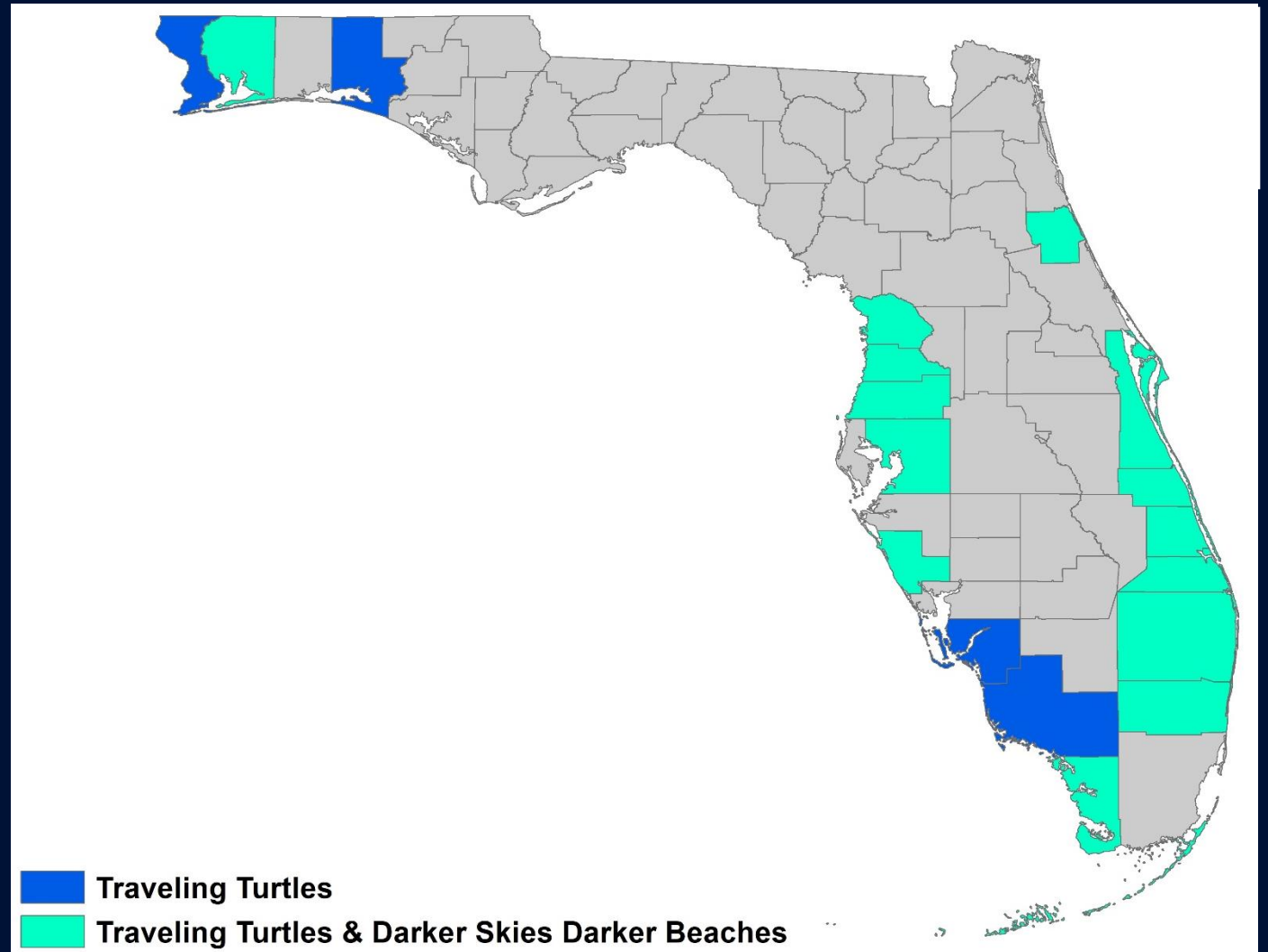
*-Teacher feedback from survey*





# Both Trunk Programs

- 105 trunks statewide
- 19 school districts
- 26 partners
  - 10 school district partners
- ~30,000 students/year



# Teacher PD Opportunities

- Occur at one of our study sites
- Field experience
- First-hand look at how we conduct research
- Mirroring classroom trunk programs



# Requesting for Your Schools

---

**Digital  
Curricula**



<https://bit.ly/CurriculaRequests>

**Traveling Turtles  
Trunk**



<https://bit.ly/TravelingTurtles>

**Darker Skies  
Trunk**



<https://bit.ly/DarkersSkies>

# Questions?

---

[rmott@inwater.org](mailto:rmott@inwater.org)

[www.inwater.org](http://www.inwater.org)

[@inwaterresearch](#)

This program was funded in part by the National Save the Sea Turtle Foundation. To learn more, visit [savetheseaturtle.org](http://savetheseaturtle.org).



# LUNCH

**Make sure to visit the vendor tables!**



# LIGHTNING SESSIONS



# CLOSING REMARKS

